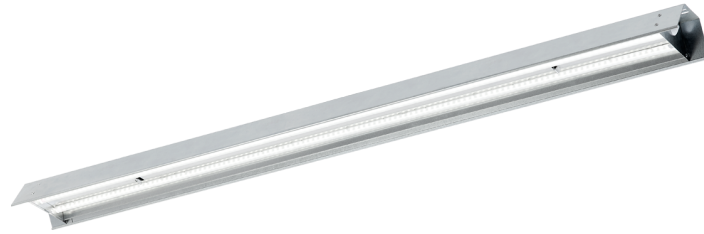


INDUSTRY LED

LED GO!

INDUSTRIAL LIGHTING



CHARACTERISTIC

Supply voltage:	230V
Frequency:	50Hz
Ingress protection IP:	IP23
Impact resistance IK:	IK07
Rated power:	72W
Energy efficiency class:	A +
Electrical protection class:	I
Dimensions:	1490x137x70mm
Material of the body:	Galvanized steel
Colour temperature:	4000K
Mounting version:	Surface / suspended
Colour of the body:	Silver
Luminous flux* :	max. 8600lm
Material of the diffuser:	PMMA
Type of the diffuser:	Opal
Version:	LS1, LS2

* Initial, tolerance +/- 10%

SPECIFICATION

An industrial luminaire rated to ingress protection IP23 made of galvanized steel sheet, complete with energy-saving LED GO! light source LEDs. The reflectors are available with wide, narrow, very narrow and butterfly distribution.

APPLICATION

The luminaire is intended for the lighting of warehouses, large stores, production floors and sports facilities. The luminaire is designed for both new installations as well as replacement of traditional T8 and T5 luminaires with energy saving LED lamps.

INDUSTRY LED



INDUSTRIAL LIGHTING

AVAILABLE OPTIONS

[Click on index to go to detailed catalogue extract](#)

Index	Rated power	Colour temperature	Luminous flux **	Material of the diffuser	Type of the diffuser	Rated radiation angle	Version	Power supply	Energy efficiency class
» 541001	72W	4000K	8600lm	PMMA	Opal	90	LS1		A +
» 541018	72W	4000K	8500lm	PMMA	Opal	60	LS1		A +
» 541025	72W	4000K	8350lm	PMMA	Opal	45	LS1		A +
» 541032	72W	4000K	7500lm	PMMA	Opal	20	LS1		A +
» 541049	72W	4000K	7900lm	PMMA	Opal	Asymmetric	LS1		A +
» 541056	72W	4000K	7800lm	PMMA	Opal	Butterfly	LS1		A +
» 541063	72W	4000K	8600lm	PMMA	Opal	90	LS2		A +
» 541070	72W	4000K	8500lm	PMMA	Opal	60	LS2		A +
» 541087	72W	4000K	8350lm	PMMA	Opal	45	LS2		A +
» 541094	72W	4000K	7500lm	PMMA	Opal	20	LS2		A +
» 541100	72W	4000K	7900lm	PMMA	Opal	Asymmetric	LS2		A +
» 541117	72W	4000K	7800lm	PMMA	Opal	Butterfly	LS2		A +
» 541124	72W	4000K	8600lm	PMMA	Opal	90	LS1	DALI	A +
» 541131	72W	4000K	8500lm	PMMA	Opal	60	LS1	DALI	A +
» 541148	72W	4000K	8350lm	PMMA	Opal	45	LS1	DALI	A +
» 541155	72W	4000K	7500lm	PMMA	Opal	20	LS1	DALI	A +
» 541162	72W	4000K	7900lm	PMMA	Opal	Asymmetric	LS1	DALI	A +
» 541179	72W	4000K	7800lm	PMMA	Opal	Butterfly	LS1	DALI	A +
» 541186	72W	4000K	8600lm	PMMA	Opal	90	LS2	DALI	A +
» 541193	72W	4000K	8500lm	PMMA	Opal	60	LS2	DALI	A +
» 541209	72W	4000K	8350lm	PMMA	Opal	45	LS2	DALI	A +
» 541216	72W	4000K	7500lm	PMMA	Opal	20	LS2	DALI	A +
» 541223	72W	4000K	7900lm	PMMA	Opal	Asymmetric	LS2	DALI	A +
» 541230	72W	4000K	7800lm	PMMA	Opal	Butterfly	LS2	DALI	A +

** Initial, tolerance +/- 10%

The company reserves the right to make design changes or upgrades in the presented product.
Product data sheet does not constitute an offer.

Revision date: 2015-12-07



Lena Lighting S.A.
ul. Kornicka 52
63-000 Sroda Wielkopolska

tel. +48 (61) 28 60 300
fax.+48 (61) 28 54 059
e-mail: office@lenalighting.pl
www.lenalighting.pl



The luminaire complies with the EU ROHS Directive 2011/65/UE.



This product is a subject to electric and electronic waste equipment regulations (WEEE).



34/2015